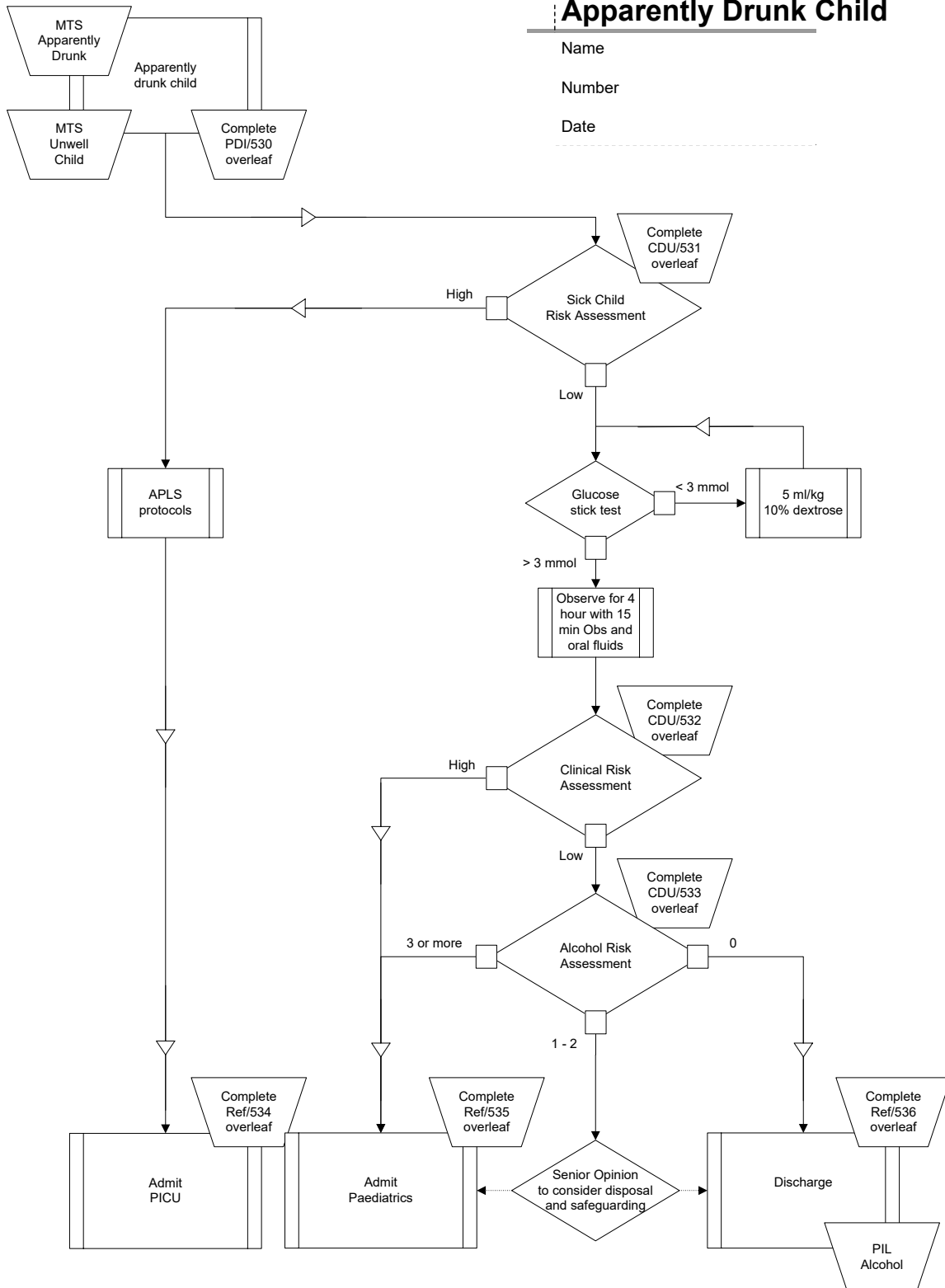


Apparently Drunk Child

Name

Number

Date



Produced By:	Alan Grayson and Catherine Jackson	Protocol number	2009-53 v 1.1
Authorised By:	Consultants Emergency Department	Date of issue	18/06/2009
Approved By:	Lead Clinician Children's Emergency Medicine	Date of review	17/06/2012

PDI/530: SUITABILITY FOR PROTOCOL DRIVEN INVESTIGATION (ALL YES)

Aged 16 years or less	Yes	No
No signs head injury	Yes	No
History of alcohol ingestion		

Order: T, P, BP, R, SaO₂, Weight. Glucose stick test

CDU/531: SICK CHILD ASSESSMENT (ANY YES)

Airway compromise / stridor / drooling	Yes	No
Inadequate breathing	Yes	No
Shock	Yes	No
Altered conscious level / Fails to react to parent	Yes	No
Floppy	Yes	No

CDU/532: CLINICAL RISK ASSESSMENT AFTER OBSERVATION (ANY YES)

Not alert and talking	Yes	No
Not taking fluids	Yes	No
Not mobile	Yes	No
No carer present	Yes	No

H if any Yes

CDU/533: ALCOHOL RISK ASSESSMENT

No responsible adult	0	1
Living rough / in care / unsafe domestic situation	0	1
Previous attendances / admissions with alcohol, drugs or self-harm	0	1
Known to services (police, social services etc)	0	1
10 years old or less	0	1
TOTAL		

0 = low risk, 1 or 2 = moderate risk, 3 or more – high risk

Ref/564: Suitable for paediatric referral for PICU admission	
Ref/565: Suitable for paediatric referral for ward admission	
Ref/566: Suitable for Discharge and Community follow up	

Produced By:	Alan Grayson and Catherine Jackson	Protocol number	2009-53 v 1.1
Authorised By:	Consultants Emergency Department	Date of issue	18/06/2009
Approved By:	Lead Clinician Children's Emergency Medicine	Date of review	17/06/2012