

Octavia House

54 Ayres Street, London, SE1 1EU



EVENTS | EXAMS | ASSESSMENTS



Room capacities and rates

	Full day
Conference Room 1	£1,270
Examination Suite	£2,900
Examination Suite plus Conference Room 1	£3,200
Meeting Room 2	£265
Meeting Room 3	£275
Conference Room 2	£1,100

Please note that the hire of the Examination Suite or Conference Room 1 includes the use of the Fellows Lounge.

Room hire at Octavia House is exempt from VAT. Rates are correct as of December 2022, and may be subject to an annual inflation-linked increase.

	Boardroom	Theatre	Round table	Classroom	Cabaret
Conference Room 1	18	65	36	18	36
Meeting Room 2	4	N/A	N/A	N/A	N/A
Meeting Room 3	6	N/A	N/A	N/A	N/A
Conference Room 2	12	35	24	8	18



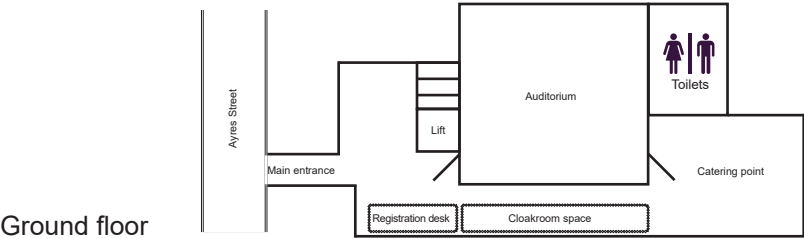
Ground floor

Octavia House has a number of event spaces across the building. The largest of which sits on the ground floor and is a flexible space. The room has built-in AV so it can easily adapt to the requirements of your meeting.

Key facts

	Full day	Boardroom	Theatre	Round table	Classroom	Cabaret
Conference Room 1	£1,270	18	65	36	18	36

Please note that the hire of the Auditorium includes the use of the Fellows Lounge.

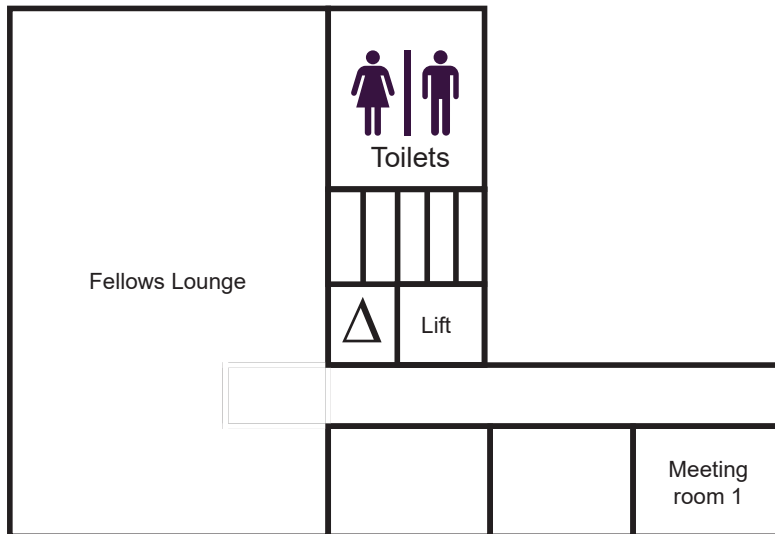


Ground floor



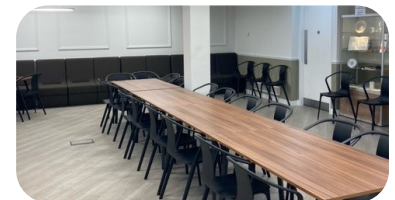
First floor

Our Fellows Lounge, on the first floor, makes a perfect catering space complementing the largest event room on the ground floor. Fixed tea and coffee points can be found on the first floor meaning hot drinks are available throughout your event.



First floor

△ Entrance/exit to first floor



Second floor

Octavia House has a dedicated examination suite with 18 individual examination rooms. Two of the rooms have sliding walls so they can be made larger if required. The floor is self-contained meaning candidates are isolated from other areas and people in the building.

Each room has state of the art recording equipment installed, linked to a centralised hub where you can monitor, record and quality assure your examinations and assessments.

With a range of sizes, the rooms can be set-up and used in a number of different ways with capacity for equipment, beds and apparatus. Plus, space for examiners, candidates and invigilators.

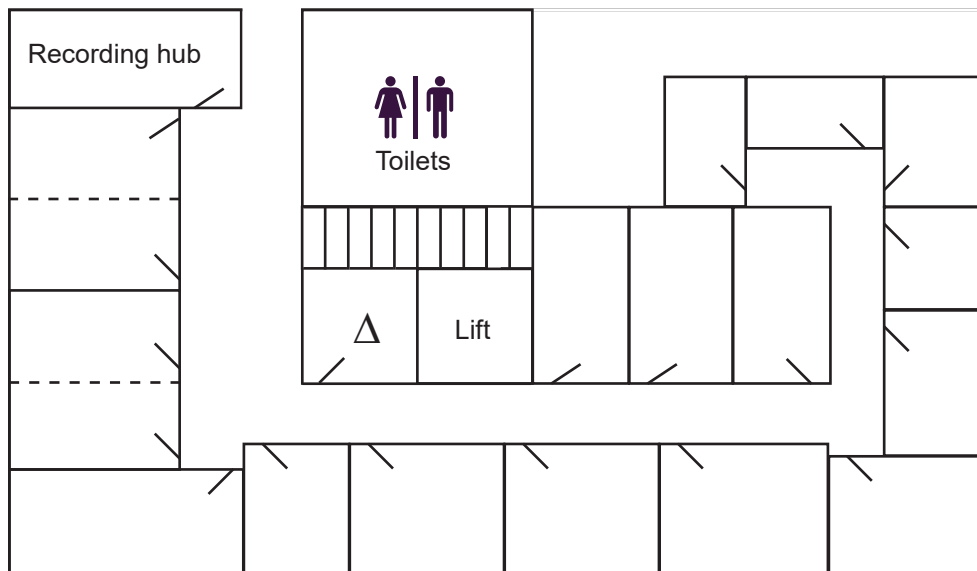
Each examination room is numbered with a briefing board outside which can be personalised for your requirements.

	Full day
Examination Suite	£2,900

Please note that the hire of the Examination Suite includes the use of the Fellows Lounge.



Second floor



Second floor

△ Entrance/exit to second floor



Third floor

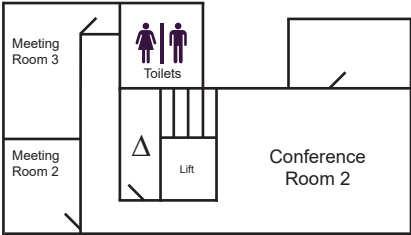
The third floor of the building presents superb views across London and as such, makes a perfect space for post-event drinks receptions. The floor can be used in a supporting role for refreshments, breakouts or discussion groups. It is a flexible and interesting space with three glass meeting rooms, open floor space and an external balcony.

Key facts

	Full day	Boardroom	Theatre	Round table	Classroom	Cabaret
Conference Room 2	£1,100	12	35	24	8	18
Meeting Room 2	£265	4	N/A	N/A	N/A	N/A
Meeting Room 3	£275	6	N/A	N/A	N/A	N/A



Third floor



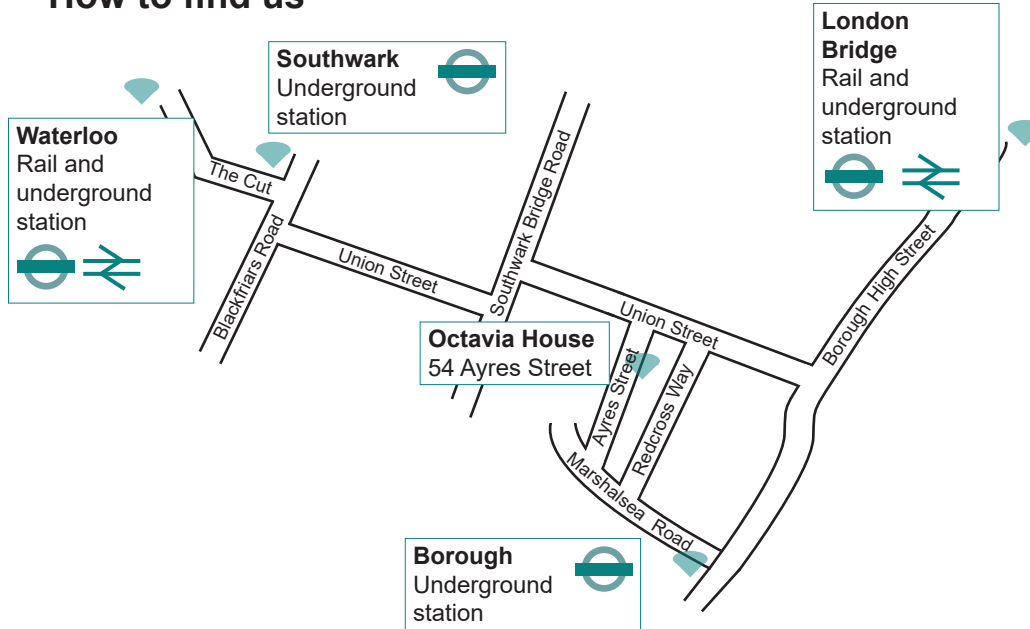
△ Entrance/exit to third floor



Notes

This image shows a single sheet of white paper with horizontal ruling lines. The lines are evenly spaced and run across the width of the page. There are no margins, text, or other markings on the paper.

How to find us



- 5 minute walk to Borough underground station
- 10 minute walk to London Bridge rail and underground station
- 10 minute walk to Southwark underground station
- 15 minute walk to Waterloo rail and underground station





