



Home Office

# The Serious Violence Duty

6 March 2024

**Laura Baynton and Neil Round**  
Serious Violence Reduction Unit,  
Home Office

# How we got here

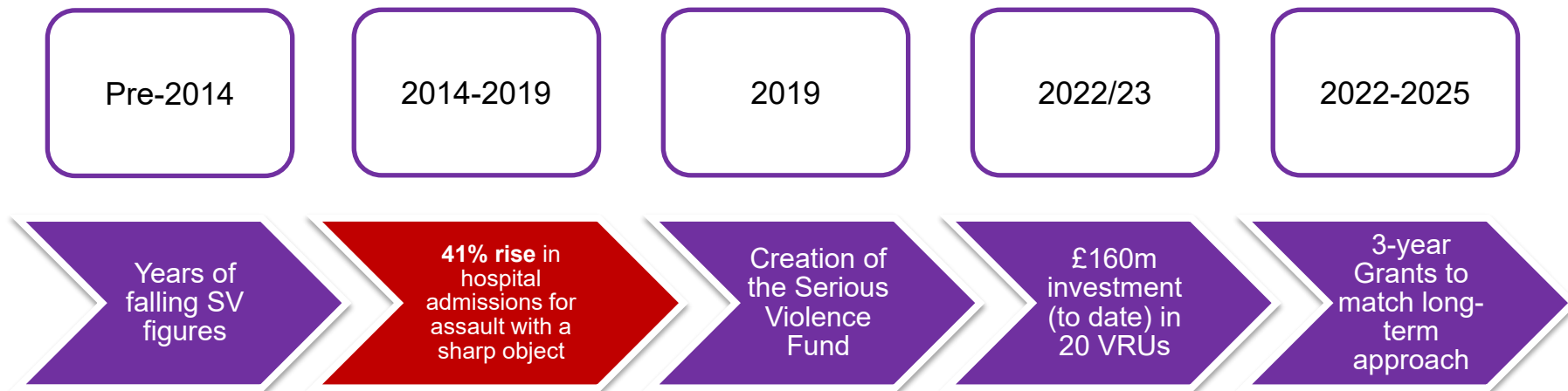
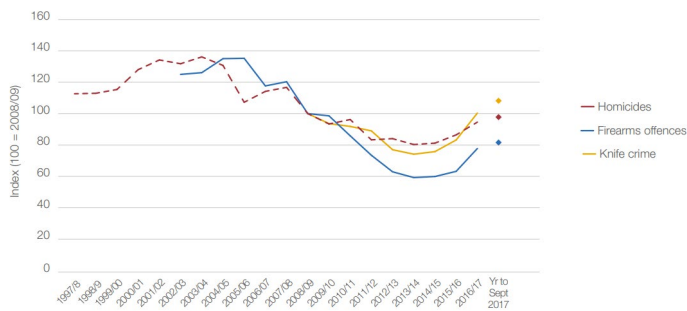


Figure 2: Indexed long-term trends in police recorded homicide, firearms offences and knife crime offences



News story

### Funding for Violence Reduction Units announced

Policing Minister confirms £35 million for 18 Police and Crime Commissioners (PCCs) to set up Violence Reduction Units.

From: [Home Office](#)  
Published 12 August 2019

News story

### 'Whole-system' approach to tackling violent crime is working

Government today announces a further £130 million to bolster efforts tackling serious violence and homicide.

From: [Home Office](#)  
Published 1 April 2022

# The Serious Violence Duty



Local partnership

Specified authorities



Justice



Health



Local authorities



Fire



Police

Responsible authorities



Prisons



Education

Share data

Strategic needs assessment

Effective local response to violence

Publish strategy

- ↓ hospital admissions for assaults with a knife or sharp object;
- ↓ knife and sharp object enabled serious violence recorded by the police;
- ↓ homicides recorded by the police
- + May use additional success measures to help track progress (including domestic abuse and sexual offences)

# Role of Local Policing Bodies (PCCs)

Local policing bodies are not subject to the Duty but may undertake a lead convener role by:



Providing funding to specified authorities



Convening and chairing meetings



Monitoring specified authorities exercise of their Serious Violence Duty functions

# Funding And Delivery



Labour costs



Justice



ICBs



Local  
authorities



Fire



Police



Prisons



Education



PCC



Local strategic needs assessment



Local response strategy



Statutory guidance



Interventions



Local response  
strategy delivery  
costs



# Role of Health Authorities

ICBs are  
'specified  
authorities'  
under the  
legislation



Strategic needs assessments and response strategies

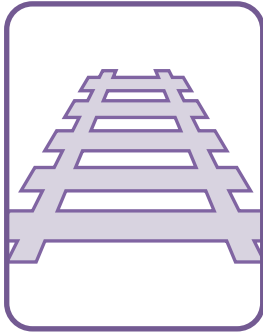


Sharing Information

# What we've learned and what next



Year 1 Insights



Delivery in 24/25