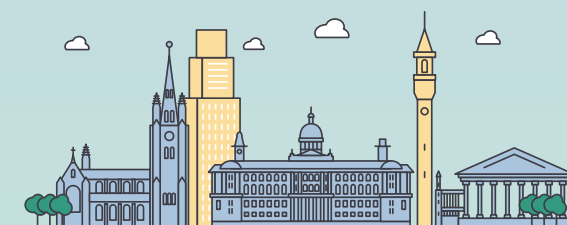


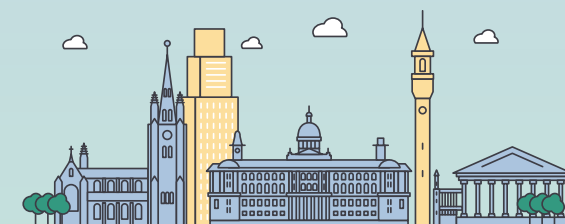
Day 1 - Tuesday 25 March	
9:00 - 9:30	Registration, refreshments and exhibition
9:30 - 10:35	Welcome and keynotes
	Welcome remarks
	Keynote presentations
10:35 - 11:05	Refreshments and exhibition
11:05 - 12:25	Cardiology: Not just a routine day in the ED
	Chest pain
	Collapse
	Paediatric cardiology
	Panel Q&A
12:25 - 13:25	Lunch and exhibition
13:25 - 15:05	Sponsored session
	Learning from sports and exercise medicine
	Managing concussion
	Sporting injuries not to miss in the ED
	TBC
	Panel Q&A

15:05 - 15:35	Refreshments and exhibition
15:35 - 17:05	EM is a risky business
	Diagnostic error and cognitive bias
	TBC
	TBC
	Panel Q&A
	President's address
17:05 - 18:05	Drinks reception
18:05	Close of Day 1



Day 2 - Wednesday 26 March	
9:00 - 9:30	Registration, refreshments and exhibition
9:30 - 11:00	Maurice Ellis Lecture
	Frailty and older people in the ED
	Panel discussion
11:00 - 11:30	Refreshments and exhibition
11:30 - 12:50	EDI
	Salma Hussain Award
	TBC
	Panel Q&A
12:50 - 13:50	Lunch and exhibition
13:50 - 15:10	TBC
	TBC
15:10 - 15:40	Refreshments and exhibition

15:40 - 17:00	Sponsored session
	Culture and workplace behaviours
	Panel discussion
17:00	Close of Day 2



Day 3 - Thursday 27 March	
9:00 - 9:30	Registration, refreshments and exhibition
9:30 - 11:40	<b>Managing complexity in the ED</b>
	Keynote session
	Complex cases - where physical health meets mental health
	Managing acute behavioural disturbance in patients with vulnerabilities and learning disabilities
	Right patient, right care guidance
	Repeat attenders
	Panel Q&A
	Refreshments and exhibition
11:40 - 12:00	Refreshments and exhibition
12:00 - 13:40	<b>End of life and dying in the ED</b>
	Recognising and managing patients at the end of life
	The role of the medical examiner, coroner and bereavement care
	Experience from the medical examiner and learning from deaths in the ED
	Tissue donation
	Panel Q&A
13:40 - 14:30	Lunch and exhibition

14:30 - 16:15	Things might have changed since med school...
	Blood borne viruses - life limiting disease or an easy cure?
	Transfusion
	Managing diabetes - pharmacology and toxicology of current treatment
	Viral wheeze or constant wheeze? How to manage paediatric shortness of breath
	Panel Q&A
	Closing remarks
16:15	Close of conference

